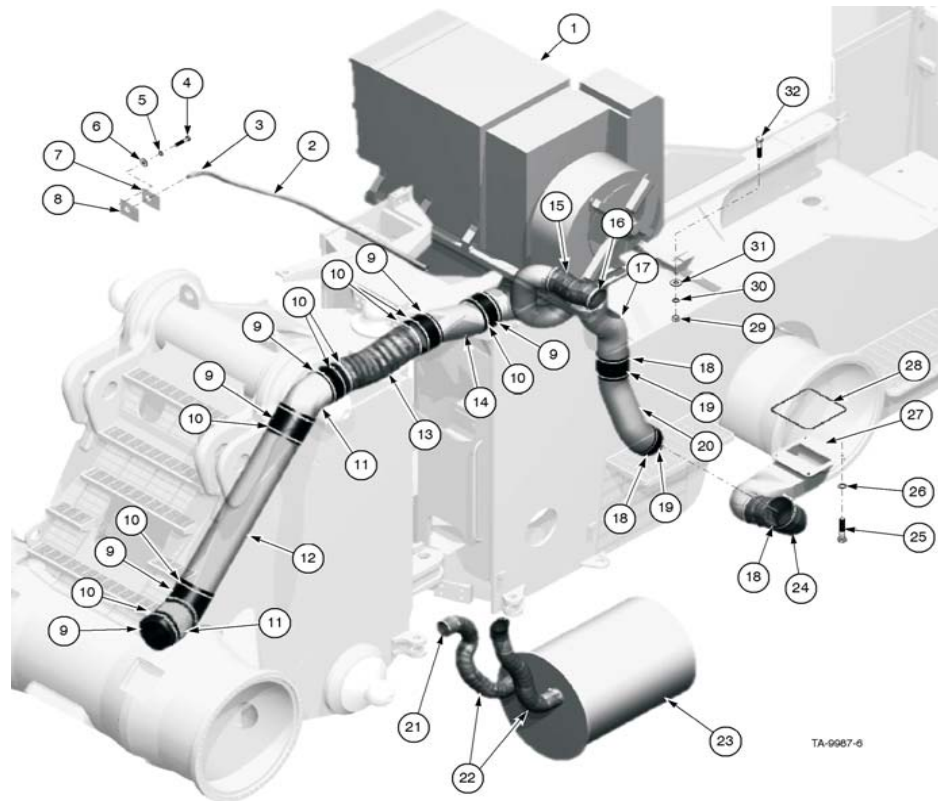


Built On Experience. Driven By Vision.



# Central Air Systems

# COOLING AIR SYSTEM

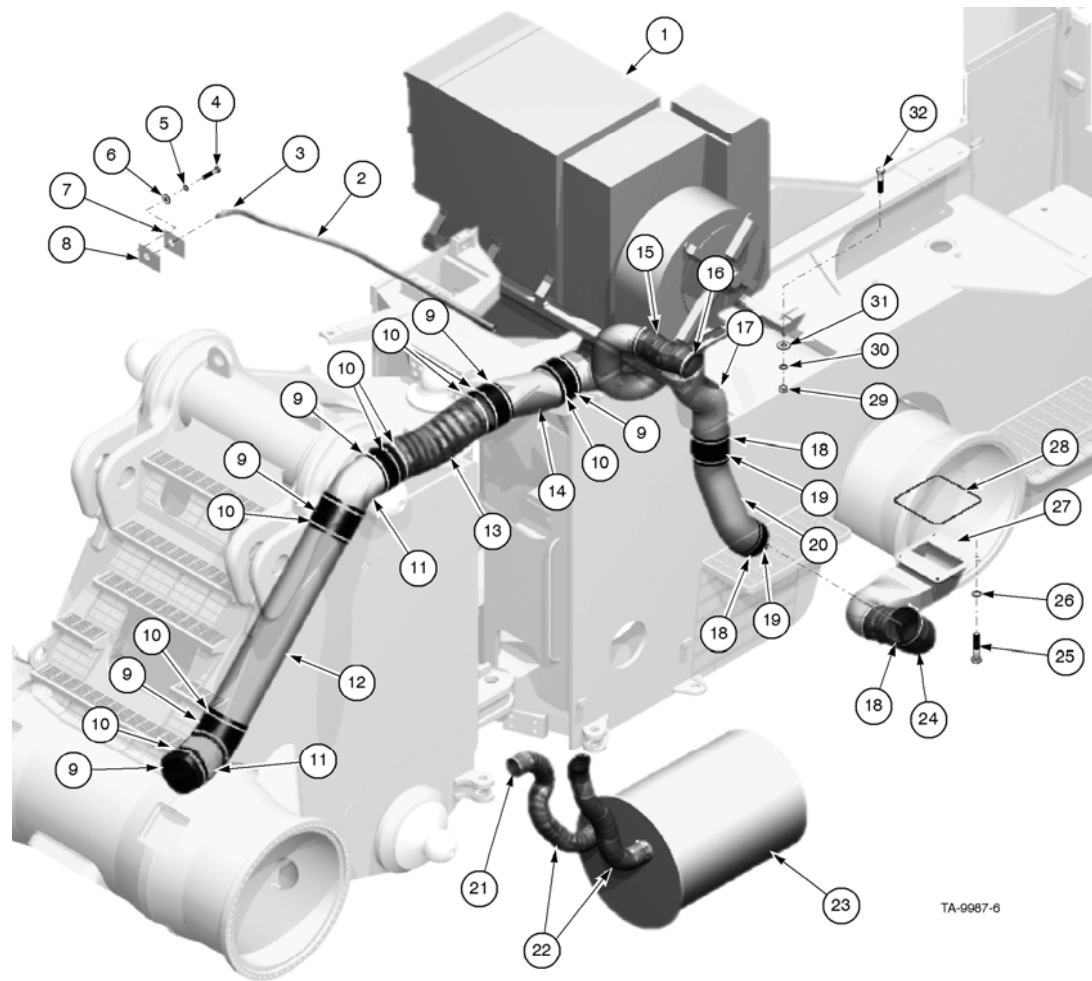
LeTourneau Technologies, Inc.



# Cooling Air System

- Theory of Operation
- Component Descriptions
- Circuit Descriptions
- Settings and Adjustments
- Troubleshooting
- Removal and Installation





# THEORY OF OPERATION

Theory of Operation

LeTourneau Technologies, Inc.

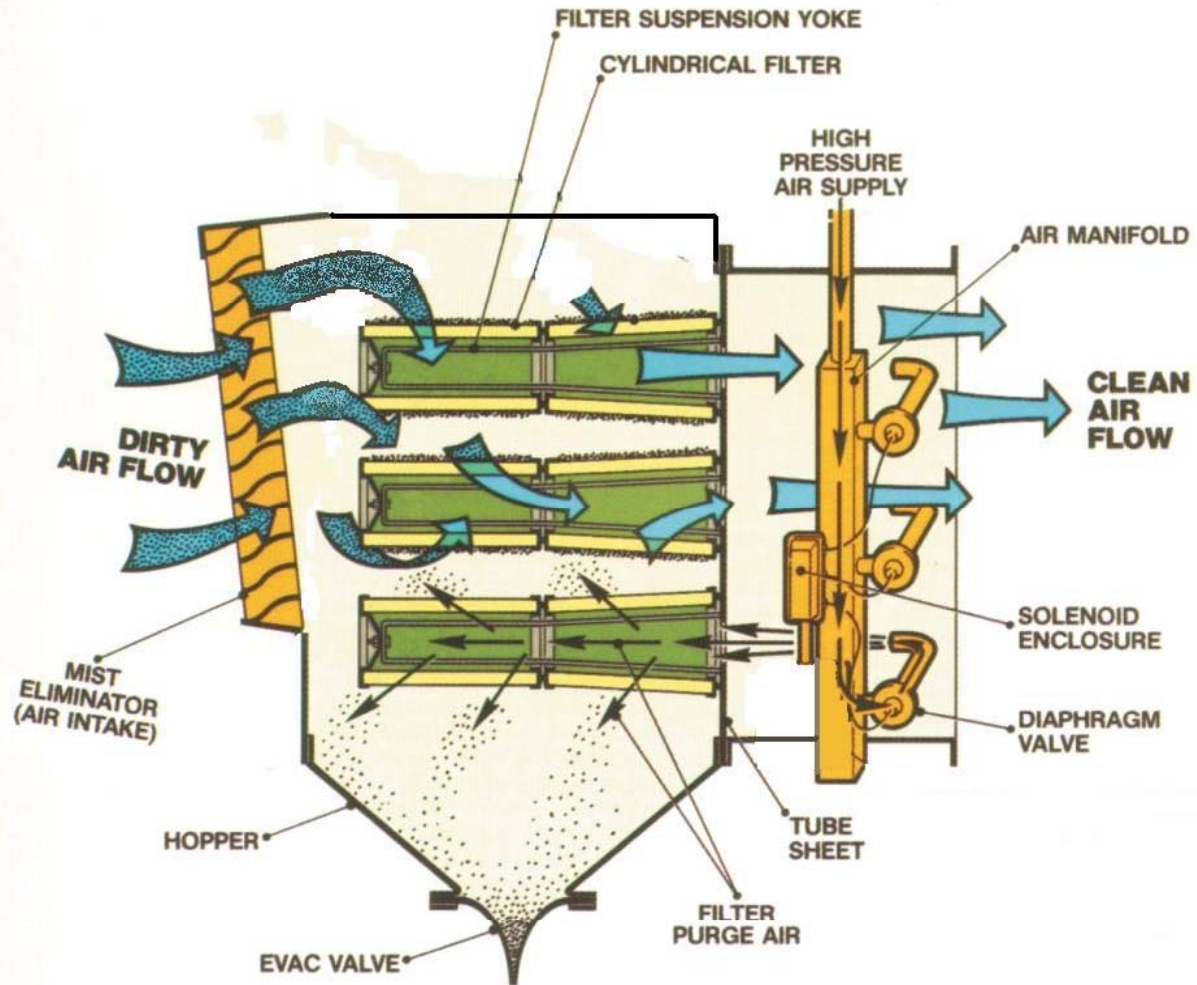


# COMPONENT DESCRIPTIONS



- **COMPONENT DESCRIPTIONS**
  - KLENZ AIR CLEANER
  - MIST ELIMINATORS
  - FILTERS
  - BLOWER HOUSING
  - BLOWER MOTOR
  - BLOWER LOAD ADAPTER
  - BLOWER DUCTING

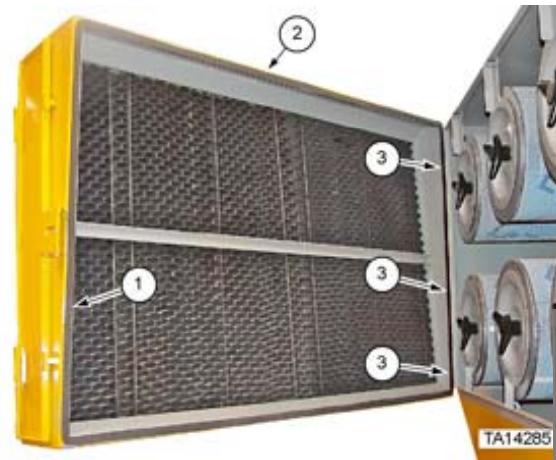




KLENZ





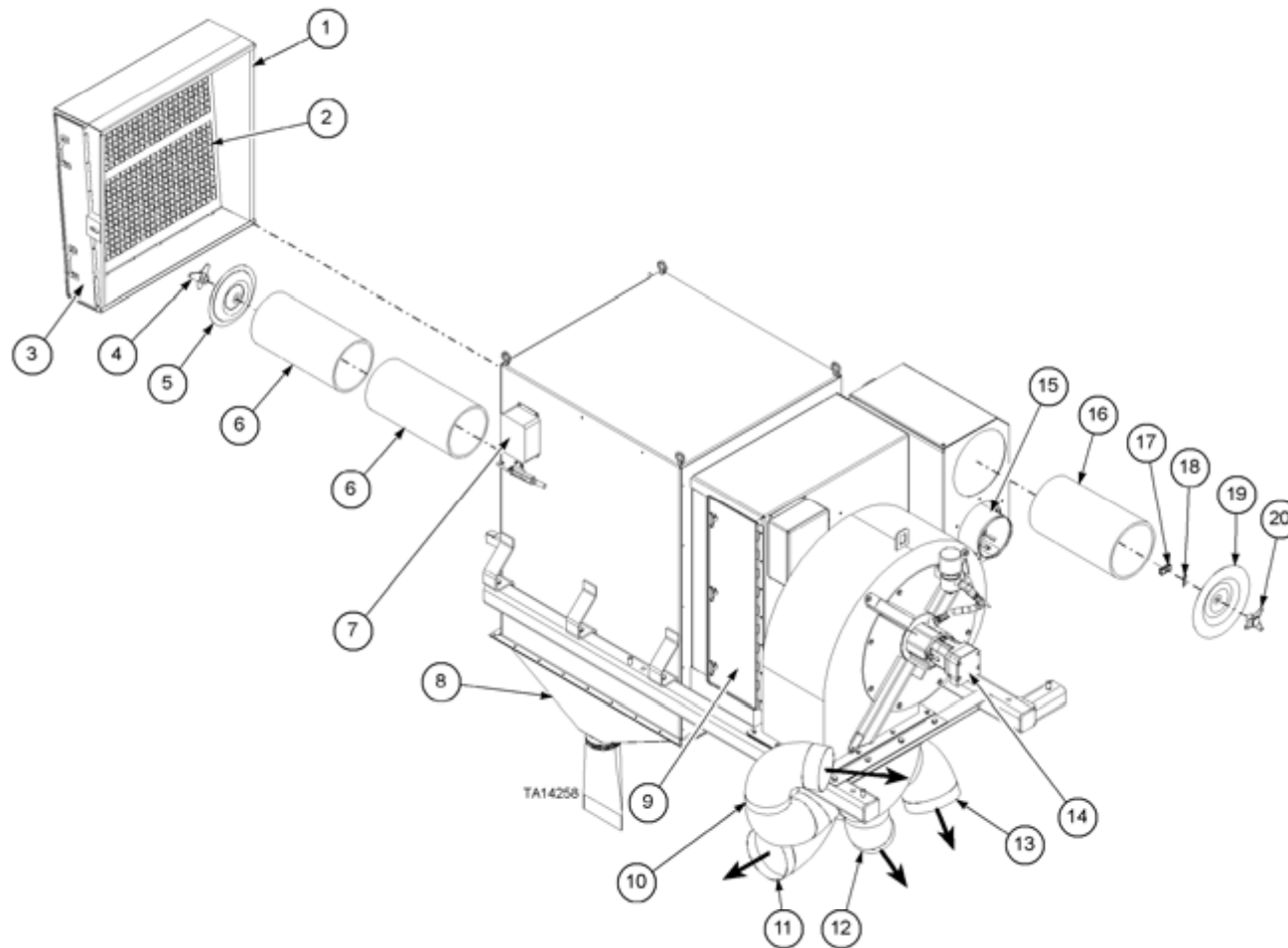


# MIST ELIMINATORS AND DUST CAPS

Component Descriptions

LeTourneau Technologies, Inc.



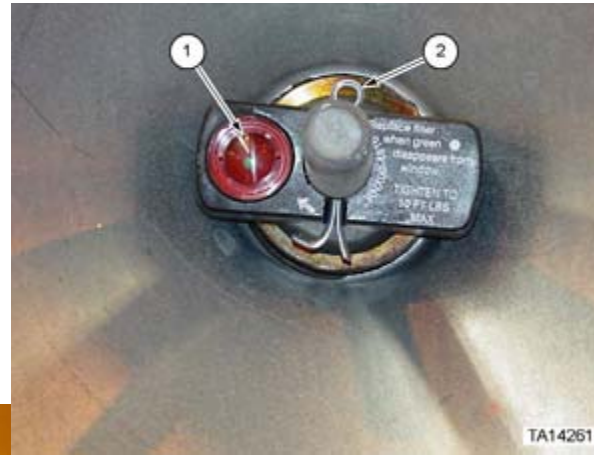


# BLOWER/KLENZ ASSEMBLY

Component Descriptions

LeTourneau Technologies, Inc.





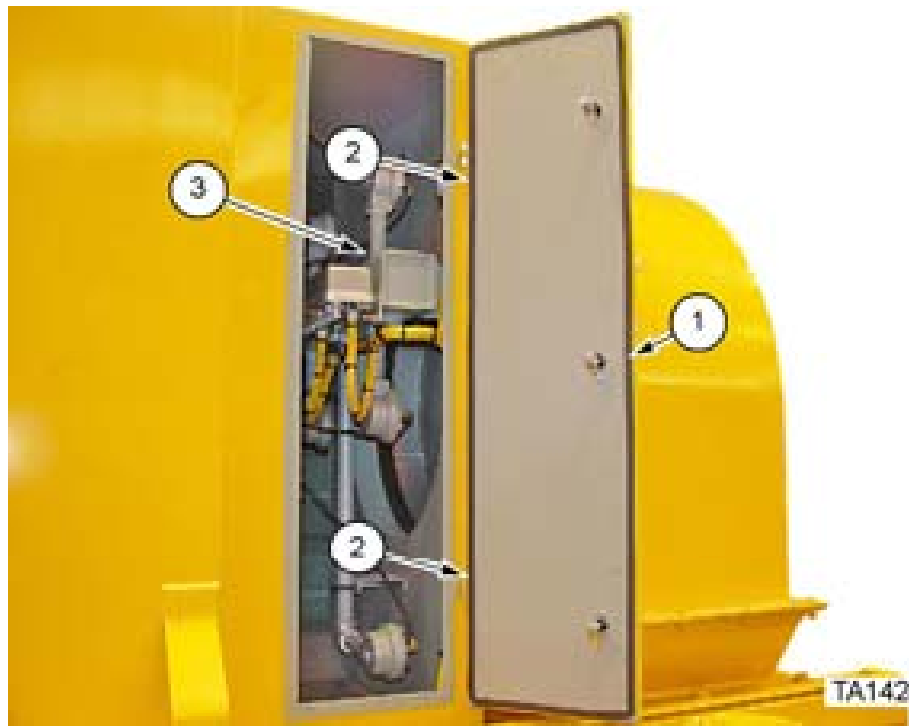
# KLENZ SAFETY FILTERS

Component Descriptions

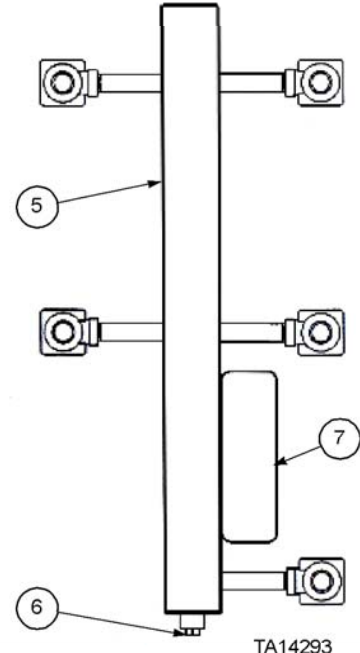
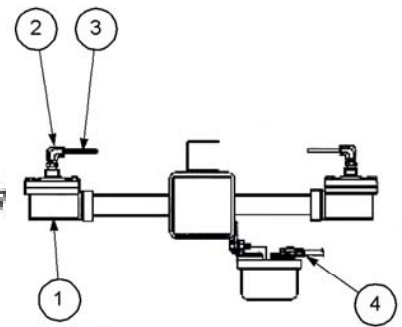
LeTourneau Technologies, Inc.





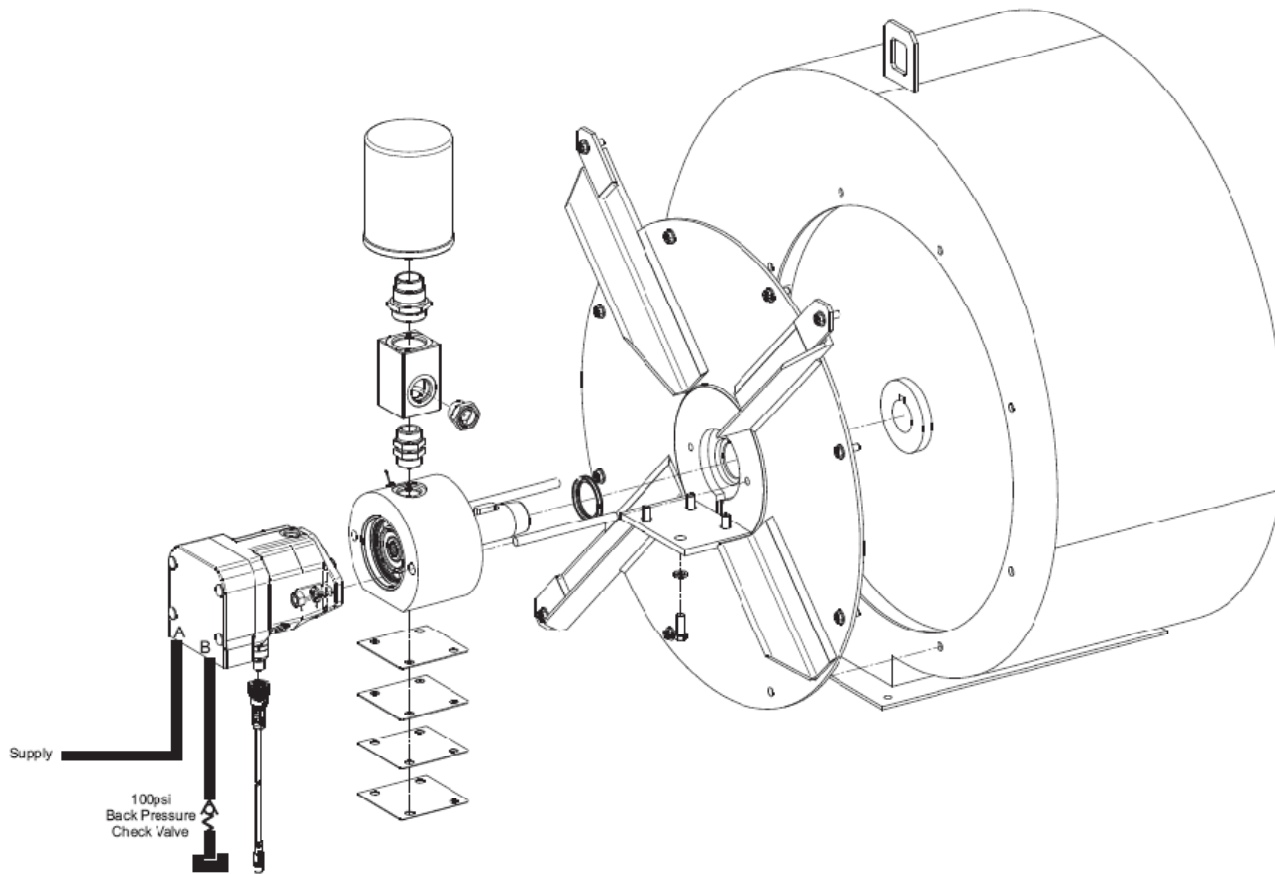


TA14287



TA14293

# PULSE VALVES

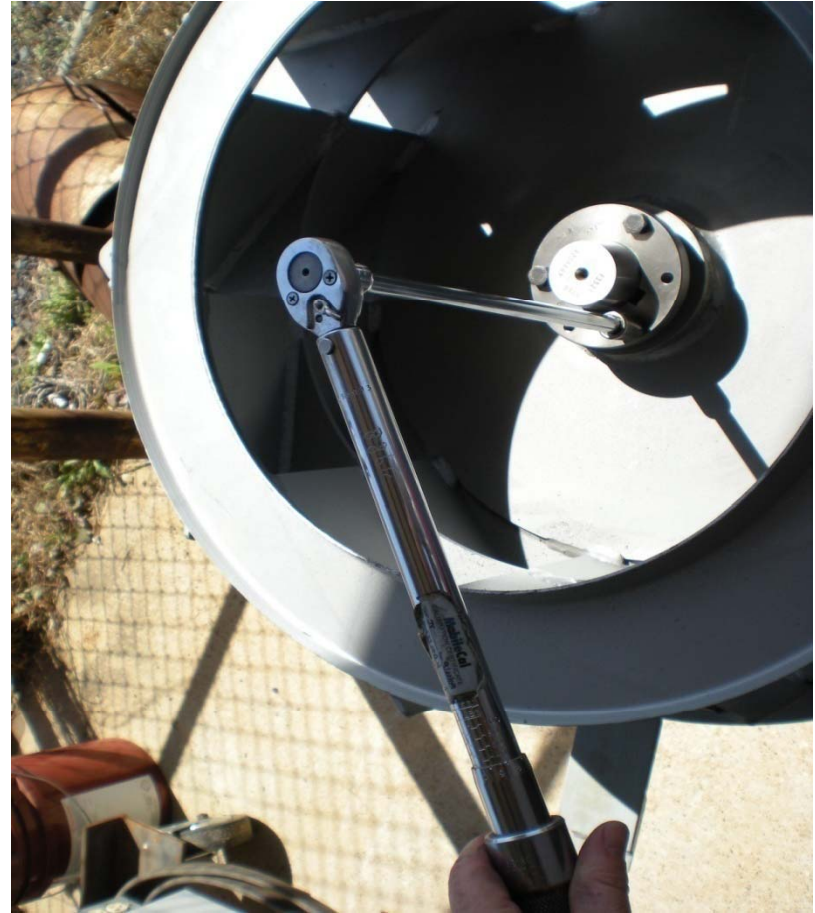


# BLOWER HOUSING

Component Descriptions

LeTourneau Technologies, Inc.





## BLOWER WHEEL

Component Descriptions

LeTourneau Technologies, Inc.



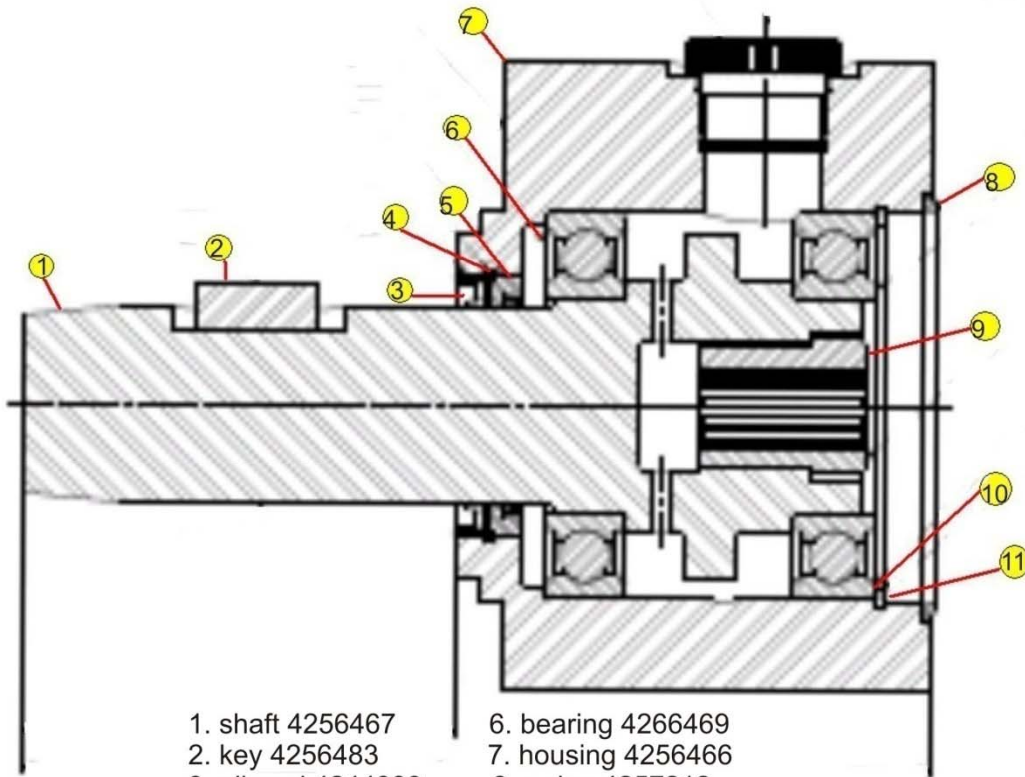


## BLOWER LOAD ADAPTER

Component Descriptions

LeTourneau Technologies, Inc.





- |                       |                           |
|-----------------------|---------------------------|
| 1. shaft 4256467      | 6. bearing 4266469        |
| 2. key 4256483        | 7. housing 4256466        |
| 3. oil seal 4244939   | 8. o-ring 4257212         |
| 4. snap ring 4147003  | 9. adapter sleeve 4256474 |
| 5. oil seal 4244938   | 10. shim 4264868          |
| 11. snap ring 4147004 |                           |

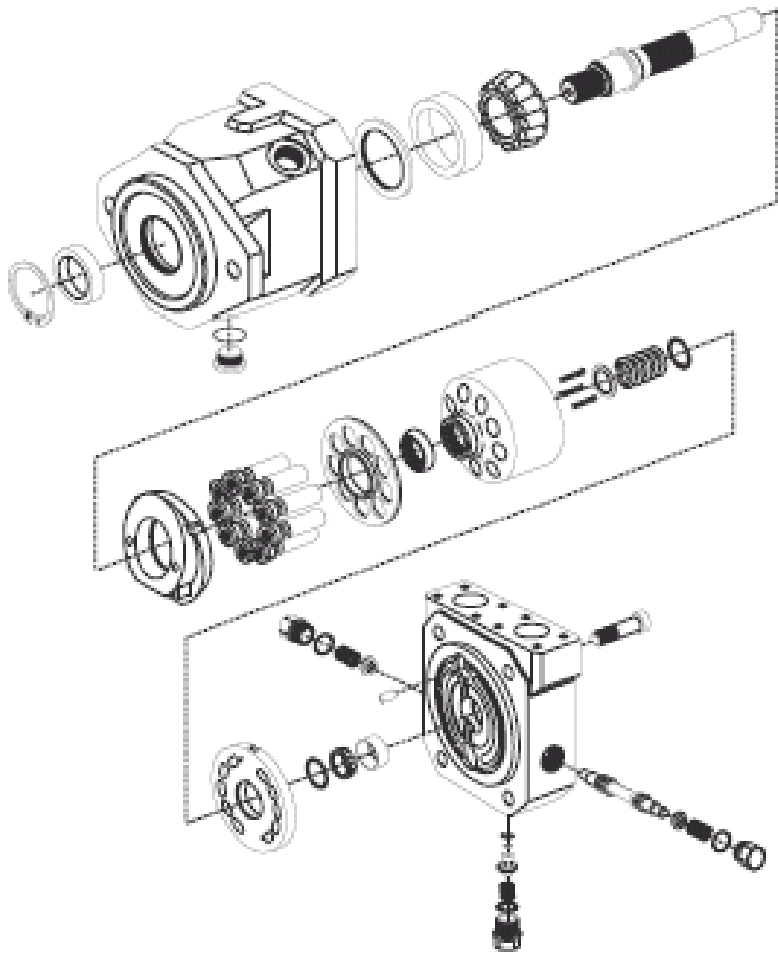


# BLOWER LOAD ADAPTER

Component Descriptions

LeTourneau Technologies, Inc.



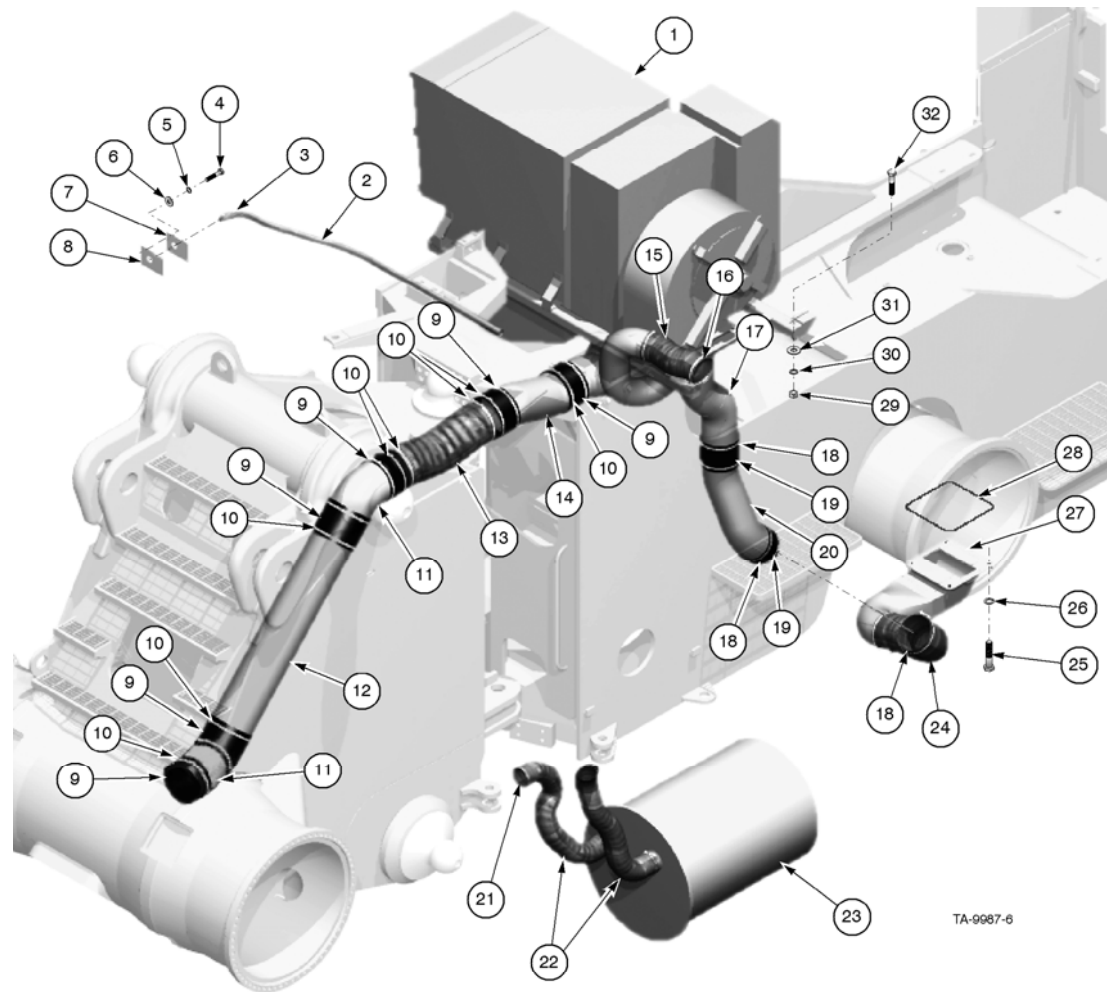


# BLOWER MOTOR

Component Descriptions

LeTourneau Technologies, Inc.



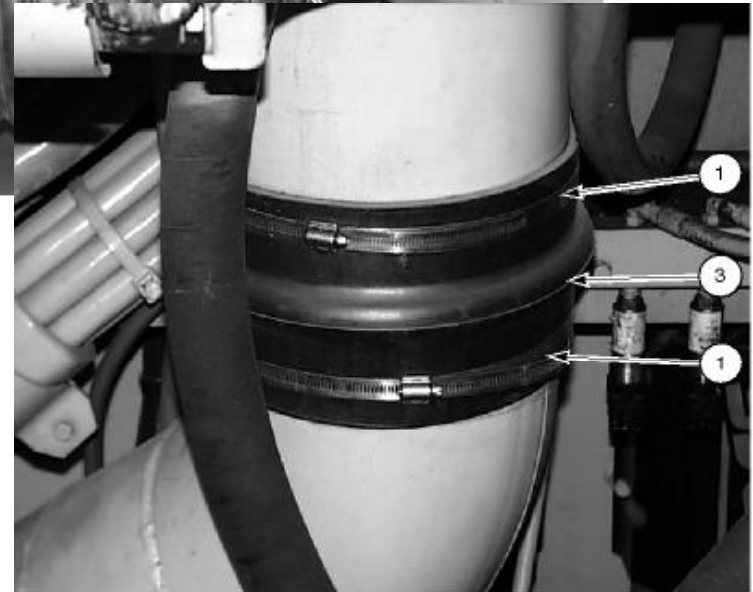
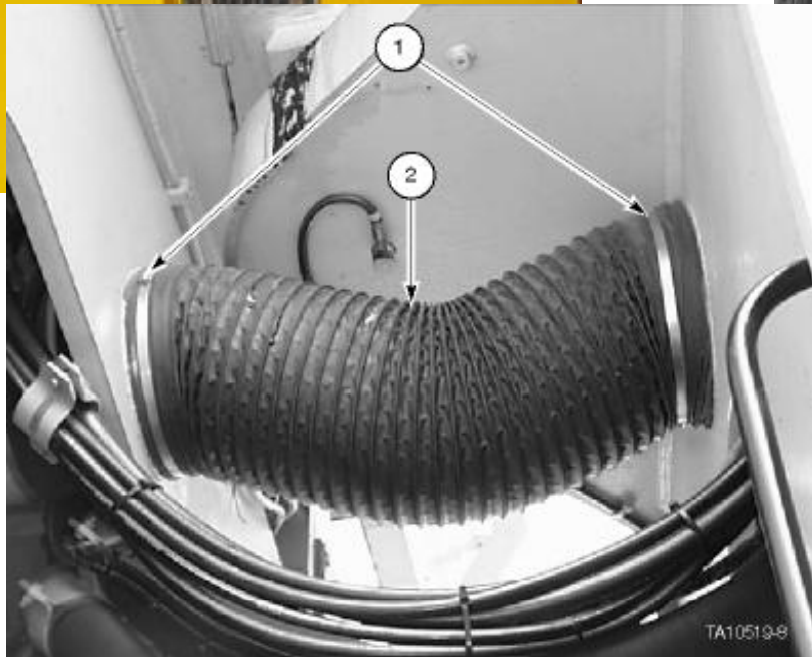
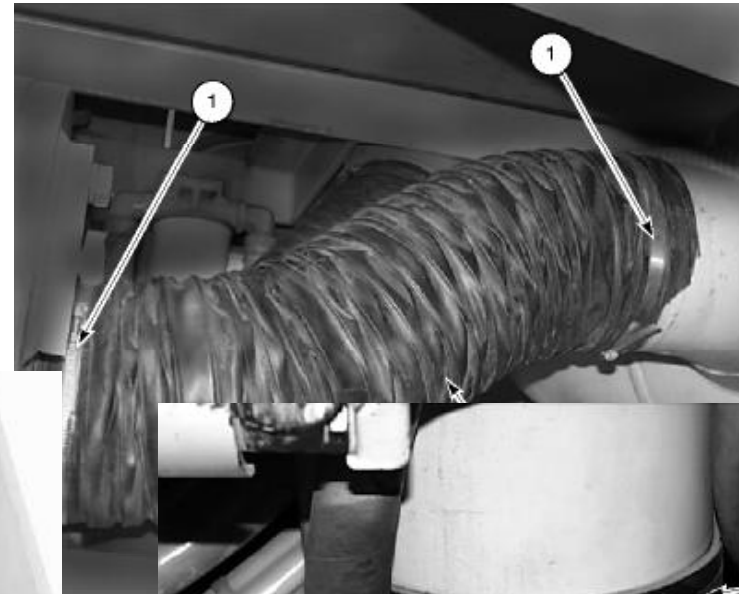
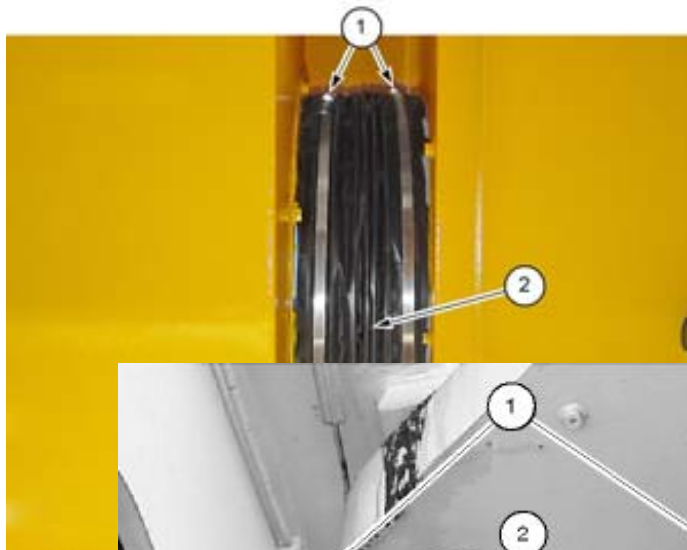


# BLOWER SYSTEM AIR DUCTING LAYOUT

Component Descriptions

LeTourneau Technologies, Inc.





# BLOWER SYSTEM AIR DUCTING

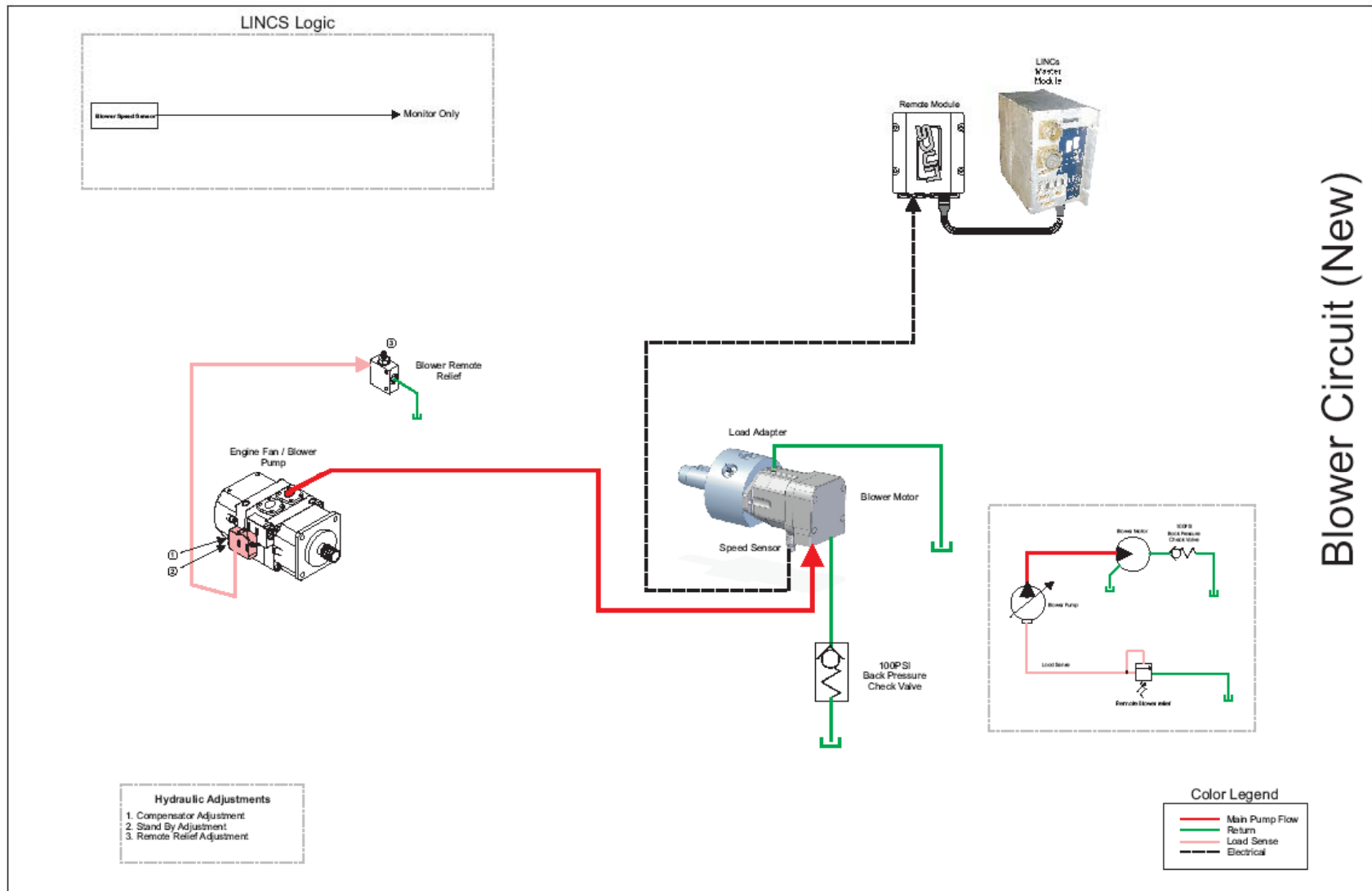
Component Descriptions

LeTourneau Technologies, Inc.



# CIRCUIT DESCRIPTIONS





# BLOWER MOTOR CIRCUIT – INSERT PDF

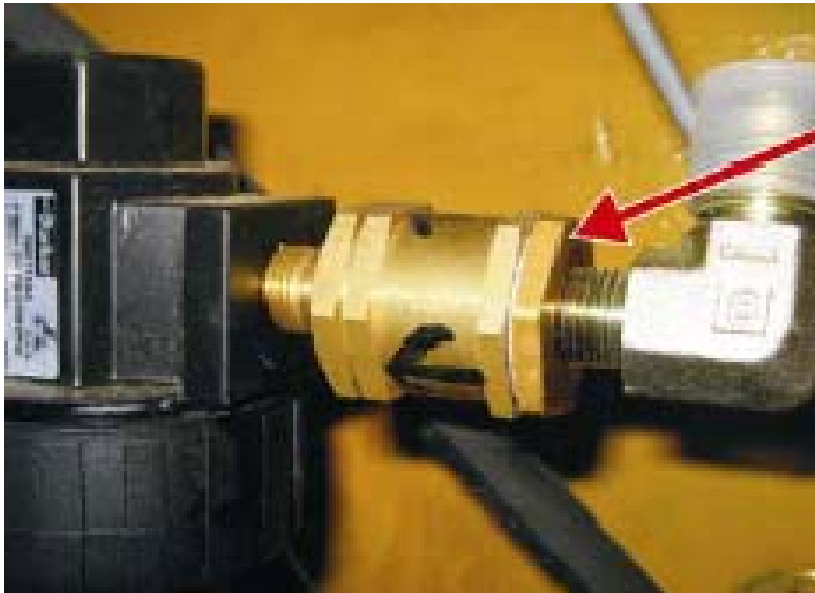
# SETTINGS AND ADJUSTMENTS



# 50 Series Setting and Adjustment Specifications



- Check inlet
- Set at 90 psi



## KLENZ REGULATOR



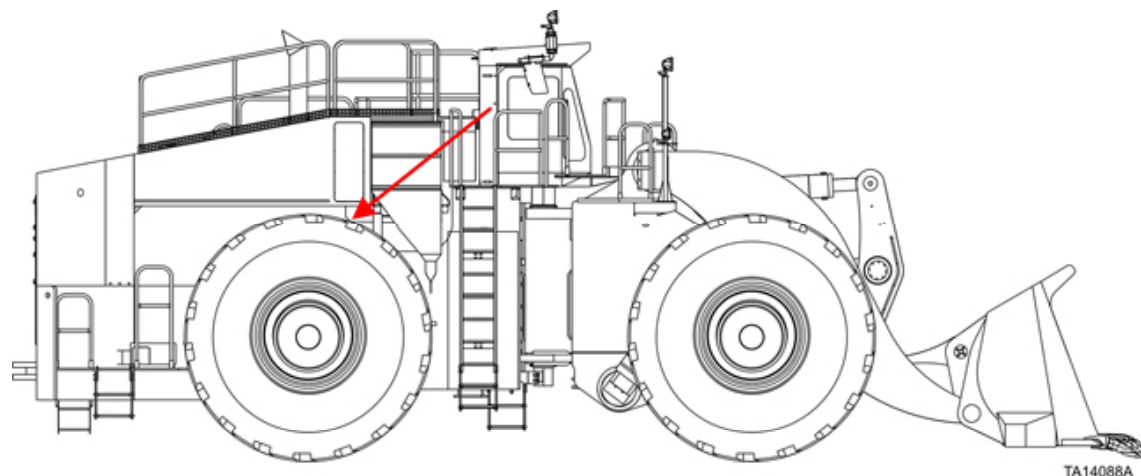
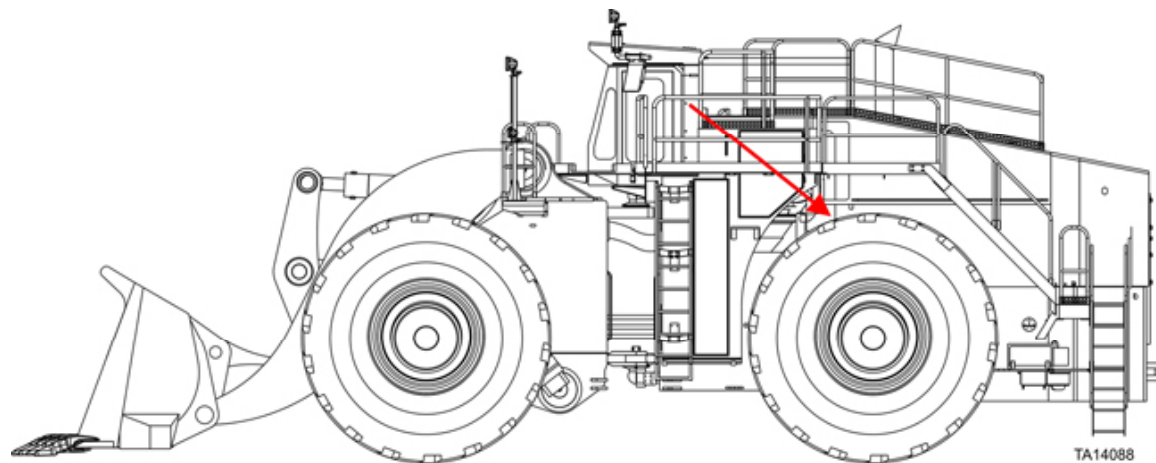


## 500 HOUR INSPECTION

Settings and Adjustments

LeTourneau Technologies, Inc.





# SAFETY ELEMENT RESTRICTION INDICATORS

Settings and Adjustments

LeTourneau Technologies, Inc.



**KLENZ™ AND AIR INTAKE SYSTEM 500-HOUR INSPECTION AND SERVICE RECORD SHEET**

Date	Time	Model	Serial No.	Hours					
<b>ENGINE RUNNING CHECKS - BEFORE &amp; AFTER ANY FILTER CHANGES (IF NOT CHANGING FILTER, RECORD BEFORE ONLY)</b>									
<b>BEFORE &amp; AFTER Filter Change</b>	<b>KLENZ™ RESTRICTION (IN H<sub>2</sub>O)</b>		<b>BLOWER RPM</b>		<b>INLET RESTRICTION INDICATORS (IN H<sub>2</sub>O) - HIGH IDLE</b>				
	Low Idle	High Idle	Low Idle	High Idle	#1 Top	#2 Mid Upper	#3 Mid Lower	#4 Bottom	
	BEFORE								
AFTER									
<b>KLENZ™ PULSE VALVES AND SOLENOIDS</b>									
<b>KLENZ™ PULSE VALVE OPERATIONAL CHECKS - DO PULSE VALVES FUNCTION CORRECTLY? (YES / NO)</b>							<b>PULSE TIMING LINCS® TIME IN SECONDS</b>		
Top Front	Top Middle	Top Rear	Center Front	Center Middle	Center Rear	Lower	Low Idle	High Idle	
<b>PRIMARY FILTER INSPECTION &amp; CHANGES</b>					<i>The KLENZ™ Pulse Valves should emit a clearly audible "BOOM" whenever the LINCS® energizes the Solenoids.</i>				
<b>KLENZ™ PRIMARY FILTER CONDITION - WAS FILTER CHANGED (OK / CHANGED)</b>									
Top Front	Top Middle	Top Rear	Center Front	Center Middle					Center Rear
<b>SAFETY FILTER INSPECTION &amp; CHANGES</b>									
<b>DO NOT REMOVE ANY SAFETY FILTER COVER UNLESS LINCS ALARM IS ACTIVATED.</b>					#1 Top	#2 Mid Upper	#3 Mid Lower	#4 Bottom	
Filter Indicator Flag in Filter Retainer Nut Color (Red / Green)									
Safety Filter Nut Cotter Pins Installed (Yes / No)									
Safety Filter Changes									
Check Air Induction System Ducting and Mounts					Left Front	Left Rear	Right Front	Right Rear	
KLENZ™ End - Hose and Clamp Check (OK / Damaged / Repaired)									
Turbo End - Hose and Clamp Check (OK / Damaged / Repaired)									
Air Inlet Ducting and Supports Check (OK / Damaged / Repaired)									
PARTS REQUIRED, ACTION REQUIRED, REPAIRS COMPLETED									
COMMENTS									
INSPECTOR'S NAME (Print)					INSPECTOR'S SIGNATURE				

# KLENZ CHECK OUT SHEET



# TROUBLESHOOTING



# 50 Series Diagnostic Tool







